

City of Guyton, Georgia
**PLANNING AND ZONING PUBLIC HEARING
AND SPECIAL CALLED MEETING**
November 1, 2022 at 7:00 P.M.



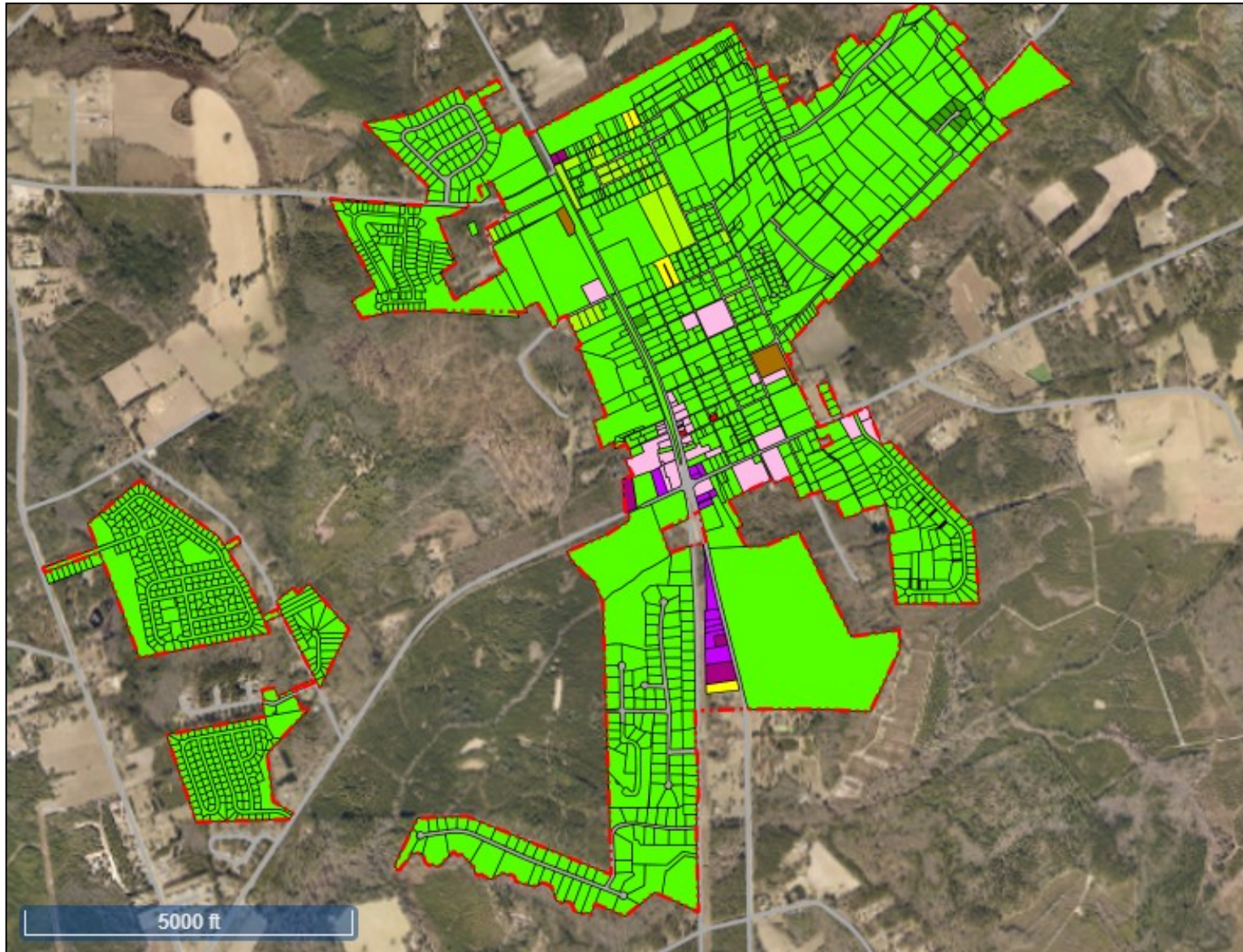
**C.D. Dean, Jr., Public Safety Complex
GUYTON GYMNASIUM
505 Magnolia Street
Guyton, GA 31312**

AGENDA

1. **Call to Order**
2. **Public Hearing regarding corrections to the Official Zoning Map of the City of Guyton**
3. **Consideration of recommendation regarding corrections to the Official Zoning Map of the City of Guyton**
4. **Consideration to Adjourn**



Guyton Proposed Zoning Map



Legend

- Address Points
- Tax Parcels With Labels
- Zoning Edit**
- R-1 - Single Family Residential
- R-2 - Low Density Multifamily Residential
- R-3 - Medium and High Density Multifamily Residential
- R-4 - Single Family Residential
- M-H - Manufactured Housing
- R-5 - Town House
- PD - Planned Development
- M-U - Mixed Use District
- C-1 - Central Business
- C-2 - Highway Commercial
- C-3 - Office - Apartment
- I-L - Light Industrial
- I-G - General Industrial
- I-A - Airport Industrial
- CP - Conservation-Preservation
- WD - Waste Disposal
- Town Boundary**
- Roads**
- Road Names**

G02400000120000	G24-120	37 EASY ST	R-1	R-1	R-1	Single Family Residential	R-1 - Single Family Residential	Same	New Sub-Parcels
G02400000121000	G24-121	39 EASY ST	R-1	R-1	R-1	Single Family Residential	R-1 - Single Family Residential	Same	New Sub-Parcels
G02400000122000	G24-122	40 EASY ST	R-1	R-1	R-1	Single Family Residential	R-1 - Single Family Residential	Same	New Sub-Parcels
G02400000123000	G24-123	38 EASY ST	R-1	R-1	R-1	Single Family Residential	R-1 - Single Family Residential	Same	New Sub-Parcels
G02400000124000	G24-124	36 EASY ST	R-1	R-1	R-1	Single Family Residential	R-1 - Single Family Residential	Same	New Sub-Parcels
G02400000125000	G24-125	34 EASY ST	R-1	R-1	R-1	Single Family Residential	R-1 - Single Family Residential	Same	New Sub-Parcels
G02400000126000	G24-126	32 EASY ST	R-1	R-1	R-1	Single Family Residential	R-1 - Single Family Residential	Same	New Sub-Parcels
G02400000127000	G24-127	30 EASY ST	R-1	R-1	R-1	Single Family Residential	R-1 - Single Family Residential	Same	New Sub-Parcels
G02400000128000	G24-128	28 EASY ST	R-1	R-1	R-1	Single Family Residential	R-1 - Single Family Residential	Same	New Sub-Parcels
G02400000129000	G24-129	26 EASY ST	R-1	R-1	R-1	Single Family Residential	R-1 - Single Family Residential	Same	New Sub-Parcels
G02400000130000	G24-130	24 EASY ST	R-1	R-1	R-1	Single Family Residential	R-1 - Single Family Residential	Same	New Sub-Parcels
G02400000131000	G24-131	22 EASY ST	R-1	R-1	R-1	Single Family Residential	R-1 - Single Family Residential	Same	New Sub-Parcels
G02400000132000	G24-132	20 EASY ST	R-1	R-1	R-1	Single Family Residential	R-1 - Single Family Residential	Same	New Sub-Parcels
G02400000133000	G24-133	15 EASY ST	R-1	R-1	R-1	Single Family Residential	R-1 - Single Family Residential	Same	New Sub-Parcels
G02400000134000	G24-134	19 EASY ST	R-1	R-1	R-1	Single Family Residential	R-1 - Single Family Residential	Same	New Sub-Parcels
G02400000135000	G24-135	74 BLACKBERRY CIR	R-1	R-1	R-1	Single Family Residential	R-1 - Single Family Residential	Same	New Sub-Parcels
G02400000136000	G24-136	72 BLACKBERRY CIR	R-1	R-1	R-1	Single Family Residential	R-1 - Single Family Residential	Same	New Sub-Parcels
G02400000137000	G24-137	70 BLACKBERRY CIR	R-1	R-1	R-1	Single Family Residential	R-1 - Single Family Residential	Same	New Sub-Parcels
G02400000138000	G24-138	68 BLACKBERRY CIR	R-1	R-1	R-1	Single Family Residential	R-1 - Single Family Residential	Same	New Sub-Parcels
G02400000139000	G24-139	66 BLACKBERRY CIR	R-1	R-1	R-1	Single Family Residential	R-1 - Single Family Residential	Same	New Sub-Parcels
G02400000140000	G24-140	64 BLACKBERRY CIR	R-1	R-1	R-1	Single Family Residential	R-1 - Single Family Residential	Same	New Sub-Parcels
G02400000141000	G24-141	62 BLACKBERRY CIR	R-1	R-1	R-1	Single Family Residential	R-1 - Single Family Residential	Same	New Sub-Parcels
G02400000142000	G24-142	60 BLACKBERRY CIR	R-1	R-1	R-1	Single Family Residential	R-1 - Single Family Residential	Same	New Sub-Parcels
G02400000143000	G24-143	58 BLACKBERRY CIR	R-1	R-1	R-1	Single Family Residential	R-1 - Single Family Residential	Same	New Sub-Parcels
G02400000144000	G24-144	56 BLACKBERRY CIR	R-1	R-1	R-1	Single Family Residential	R-1 - Single Family Residential	Same	New Sub-Parcels
G02400000145000	G24-145	54 BLACKBERRY CIR	R-1	R-1	R-1	Single Family Residential	R-1 - Single Family Residential	Same	New Sub-Parcels
G02400000146000	G24-146	52 BLACKBERRY CIR	R-1	R-1	R-1	Single Family Residential	R-1 - Single Family Residential	Same	New Sub-Parcels
G02400000147000	G24-147	50 BLACKBERRY CIR	R-1	R-1	R-1	Single Family Residential	R-1 - Single Family Residential	Same	New Sub-Parcels
G02400000148000	G24-148	48 BLACKBERRY CIR	R-1	R-1	R-1	Single Family Residential	R-1 - Single Family Residential	Same	New Sub-Parcels
G02600000001E00	G26-1E	0 LINTON LN &	R-1	<Null>	R-1	Single Family Residential	R-1 - Single Family Residential	Different	Utility or drainage easement on Linton Ln?
NoPIN1	-		AR-1	R-1	R-1	Single Family Residential	R-1 - Single Family Residential	Same	Railroad ROW?
NoPIN2	-		AR-1	R-1	R-1	Single Family Residential	R-1 - Single Family Residential	Same	Railroad ROW?
NoPIN3	RAIL-ROW		AR-1	R-1	R-1	Single Family Residential	R-1 - Single Family Residential	Same	Railroad ROW?